



SAW Components

Data Sheet R 723





SAW Components

R 723

Resonator

434,42 MHz

Data Sheet

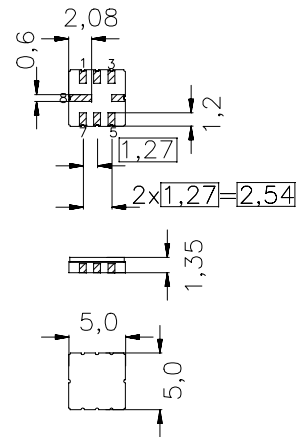
Ceramic package **QCC8C**

Features

- 1-port resonator
- Provides reliable, fundamental mode, quartz frequency stabilization i.e. in transmitters or local oscillators

Terminals

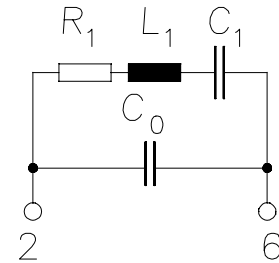
- Ni, gold plated



typ. dimensions in mm, approx. weight 0,1 g

Pin configuration

- | | |
|-----|----------------------------------|
| 2 | Input |
| 6 | Output, grounded in 1-port conf. |
| 4,8 | Ground (case) |
| 1,3 | float |
| 5,7 | float / ground |



Type	Ordering code	Marking and Package according to	Packing according to
R 723	B39431-R 723-U310	C61157-A7-A56	F61074-V8023-Z000

Electrostatic Sensitive Device (ESD)

Maximum ratings

Operable temperature range	T_A	-45/+85	°C	between any terminals
Storage temperature range	T_{stg}	-45/+85	°C	
DC voltage	V_{DC}	12	V	
Source power	P_s	0	dBm	


SAW Components
R 723
Resonator
434,42 MHz
Data Sheet
Characteristics

Reference temperature: $T_A = 25\text{ °C}$
 Terminating source impedance: $Z_S = 50\ \Omega$
 Terminating Load impedance: $Z_L = 50\ \Omega$

		min.	typ.	max.	
Center frequency ¹⁾	f_c	434,345	434,42	434,495	MHz
Minimum insertion attenuation	α_{\min}	—	1,2	1,8	dB
Unloaded quality factor	Q_U	7700	12800	—	
Ageing of f_c		—	—	± 50	ppm
Equivalent circuit elements					
Motional capacitance	C_1	—	1,9	—	fF
Motional inductance	L_1	—	70,64	—	μH
Motional resistance	R_1	—	15	25	Ω
Parallel capacitance ²⁾	C_0	—	3,0	—	pF
Temperature coefficient of frequency ³⁾	TC_f	—	- 0,032	—	ppm/K ²
Turnover temperature	T_0	10	—	40	$^{\circ}\text{C}$

¹⁾ Center frequency is defined as maximum of the real part of the admittance

²⁾ If used in two port configuration (pin 2-input, pin 6-output) C_0 is reduced by approx. 0,3 pF.

³⁾ Temperature dependence of f_c : $f_c(T_A) = f_c(T_0)(1 + TC_f(T_A - T_0)^2)$



SAW Components

R 723

Resonator

434,42 MHz

Data Sheet

Published by EPCOS AG

Surface Acoustic Wave Components Division, SAW CE AE PD

P.O. Box 80 17 09, D-81617 München

© EPCOS AG 2001. All Rights Reserved.

As far as patents or other rights of third parties are concerned, liability is only assumed for components per se, not for applications, processes and circuits implemented within components or assemblies.

The information describes the type of component and shall not be considered as assured characteristics.

Terms of delivery and rights to change design reserved.

For questions on technology, prices and delivery please contact the sales offices of EPCOS AG or the international representatives.

Due to technical requirements components may contain dangerous substances. For information on the type in question please also contact one of our sales offices.